

A large, stylized graphic of the number '50' in gold. The '5' is composed of several overlapping, slightly offset rectangular outlines, creating a sense of depth and movement. The '0' is formed by two thick, curved gold bands that overlap to create a circular shape. The overall design is modern and celebratory.

ARCH AND GODFREY

50 YEAR ANNIVERSARY CELEBRATION



CONTENTS

- 4 **Message from the Managing Director**
Garth Arch

- 6 **Arch and Godfrey: Building a Tradition of Excellence**
Past, present and future

- 10 **Staff Past & Present**

- 12 **Past Projects By The Decade – 50 Selected Projects**
1972-1989
1990s
2000s
2010s
2020-2022

- 122 **Current Projects**
The Watermark
Health City Oncology Center at Camana Bay (Block B)

- 130 **Private Residences**

1972-2022



ARCH & GODFREY, HEAD OFFICE – 2021 GOVERNOR'S AWARD RECIPIENT FOR DESIGN AND CONSTRUCTION EXCELLENCE IN THE CAYMAN ISLANDS.



MESSAGE FROM THE MD

It has been 50 years since my father, Heber Arch, my grandfather, Henry J. Arch and my uncle, Arthur Arch, joined with Townend and Godfrey Brothers Ltd. of Jamaica to establish Arch and Godfrey.

Heber, a hard-working family man of faith, who loves to build, dedicated his life to the company, growing it into one of the leading construction firms in the Cayman Islands, recognising that the success and longevity of the company is due not only to a lot of hard work but also to the Lord's faithfulness and blessing. From private homes to luxury condominiums, office buildings, retail and hotels, the company has played an integral role in shaping the Cayman Islands' built environment. When I reflect on what we, as a company, have achieved over the past five decades, I am both inspired and humbled.

Arch and Godfrey's legacy is visible across Grand Cayman. Our accomplishments are the work of many, and we owe a huge debt of gratitude to our loyal staff, past and present – a number of whom have remained with us for their entire careers. We are equally thankful to our faithful clients, many of whom have trusted us time and time again to execute their visions, some committing on no more than a handshake. Thanks are also due to the myriad suppliers, sub-contractors, architects, engineers, quantity surveyors, lawyers, bankers, insurance brokers and countless others who have worked alongside us to turn plans into realities. Without these joint efforts, we would not be where we are today.

These islands have changed dramatically over the past 50 years, growing into a sophisticated and advanced place to live, work and vacation. With each generation, residences, offices and hotels have grown larger, more luxurious and more daring in design. Within the context of this rapid development, Arch and Godfrey has continually adapted and innovated – and will continue to do so – in order to meet the evolving demands of the construction industry.

Cayman's robust economy and thriving real estate market bode well for the future. Arch and Godfrey looks forward to continuing to play an active role in the ongoing development and prosperity of these islands.

My predecessors built Arch and Godfrey on a solid foundation: their uncompromising commitment to quality, excellence and integrity informed every aspect of the business. That ethos has been passed down to the next generation and it is my privilege to continue to build upon this legacy of excellence in construction.

As we prepare for the next 50 years, it is with a renewed commitment to forging lasting relationships with our clients, to embracing emerging technologies, and ensuring that construction in the Cayman Islands is on par with the best in the world.

Garth Arch
Managing Director



ARCH AND GODFREY: BUILDING A TRADITION OF EXCELLENCE

Arch and Godfrey, one of the largest, most experienced and well-respected general contractors in the Cayman Islands, celebrates 50 years in business this year. Over the past five decades, the company has constructed many of the islands' most iconic and innovative buildings and has established a solid reputation as Cayman's most trusted construction firm.

As we reflect on the journey that has led us to this point, it is with a sense of humility and gratitude. As we set our sights on the next 50 years, it is with the confidence that the best is yet to come, both for the company and for our home, the beloved Cayman Islands.

Past

When Arch and Godfrey was founded, tourism in the Cayman Islands was in its infancy. The first condominiums and hotels were starting to be built and the need for construction services was growing. At the time, the industry was dominated by two major British contractors, and although the Arch family owned a small construction company, they were not in a position to compete with the large-scale, international firms. To do that, they required the expertise and support of a company with a well-established reputation.

Thus, on the 1st of August, 1972, H. J. Arch Construction merged with Jamaican contractors Townend and Godfrey Brothers Ltd. to form Arch and Godfrey.

The merger was the product of a relationship that had begun several years earlier. After graduating from engineering college, Heber Arch stayed on in Jamaica to gain overseas experience prior to returning to work with his father, Henry. He spent that time working for Townend and Godfrey Brothers Ltd. — one of the most reputable construction companies in Jamaica — in various supervisory roles, quickly earning the respect and admiration of directors, Michael and James Godfrey.

"A few years after Heber returned home," Michael recalls, "I visited the Cayman Islands and spent some time with him. With the increasing demand for construction services here, Heber and I saw the opportunity to form a business together."

The company's first few contracts were design-build projects for large, finely finished homes. In those early years, the team was small and they endeavoured to self-perform almost all aspects of their projects. Heber designed and prepared the drawings for most



GRANDVIEW, 1997



ORIA TERMINAL, 1984-2019



APPLEBY TOWER, 2013

of the houses, as well as managed projects, prepared estimates and ordered materials; his brother, Arthur, carried out the electrical, plumbing and A/C design and installation, and Lloyd Scott continued on from H. J. Arch Construction as senior general foreman.

At just 23, Heber was young and relatively inexperienced, and his father's advice proved invaluable: "Son," he said, "you are taking on a massive responsibility and challenge. It is absolutely necessary that you hire older and much more experienced staff than yourself. Listen, watch, question, and learn from them."

Heber did exactly that. He recruited employees with international construction experience and ensured that the company delivered consistent, quality workmanship. Arch and Godfrey quickly gained a reputation for completing projects to a high standard, on time, and within budget.

By the 1980s, the company had ventured into building offices – the first of which was the Guinness Mahon building (now Artemis House) – and some large condominium developments, including Lacovia, Cayman Coves and Villas Pappagallo.

A major milestone for the company was the construction of the Owen Roberts International Airport Terminal in 1984. It was a large-scale project and the company's first contract with the Cayman Islands Government. Arch and Godfrey completed construction several months ahead of schedule, achieving substantial savings for the Government and cementing their position as leaders in the construction industry in the Cayman Islands.

According to the Caribbean Development Bank, which funded the airport project, it was the first time in their history that a project had been completed under budget and on schedule.

Present

Much of the built environment in the Cayman Islands today has been shaped by Arch and Godfrey.

The company has built several hotels, including the Comfort Suites, Sunshine Suites and several phases of Morritt's Tortuga Club, as well as having undertaken an extensive renovation of the Westin. Arch and Godfrey has constructed retail centres such as Bayshore Mall, Grand Harbour and Governor's Square and has built office buildings, the Pines Retirement Home, supermarkets, schools, and many fine residences across the island. Working alongside local partners, Arch and Godfrey has also completed projects further afield in the British Virgin Islands, Turks and Caicos, and Jamaica.

However, if there is a niche that the company has carved out, it is in the construction of luxury condominiums on Seven Mile Beach. From Lacovia, the Commonwealth and Laguna del Mar in the 1980s, to Grandview, Regal Beach and the Pinnacle in the 1990s, to the Renaissance and Water's Edge in the 2000s. Arch and Godfrey is behind many of the island's most prestigious residential developments. These projects have grown in complexity over the years and in 2014 Arch and Godfrey constructed The WaterColours, the first ten-storey building in the Cayman Islands.

Throughout Arch and Godfrey's history, the distinguishing factor that has set the company



BOARD OF DIRECTORS: HEBER ARCH, MICHAEL GODFREY, AND GARTH ARCH

apart from others has been its focus on building productive, harmonious relationships both internally and externally. Most of the company's clients have worked with them for years, returning time and time again with new projects.

"We have clients we have worked with for over 40 years," Managing Director, Garth Arch, observes. "We have built trust with them by consistently delivering on our commitments through experience and integrity, and with excellent quality." The firm has equally forged longstanding relationships with sub-contractors and suppliers over the years. Knowing they can count on the professionalism of these industry partners has been key to the

seamless execution of countless construction projects. These strong relationships are also evident internally. Arch and Godfrey has consistently fostered a company culture of respect and appreciation, which begins at the top. In half a century of working together the founding partners have never had a disagreement that has affected either their friendship or their business relationship. Every employee is a highly valued member of a close-knit team, and the fact that so many staff remain with the company long-term is a testament to that. Arch and Godfrey's achievements to date would not have been possible without the skill and dedication of the entire team.



Future

Arch and Godfrey has never, and will never, rely on reputation alone. Embracing innovation and adopting new technologies – from Building Information Technology to sustainable construction practices – has ensured that the company remains at the forefront of advances in the industry.

Since building the Cayman Islands' first energy-efficient project, the Genesis Building, back in 1986, Arch and Godfrey has gone on to adopt and promote sustainable design and building practices in numerous developments.

“Part of our advisory role is always to look at the benefits and cost implications of sustainable construction options,” Garth explains. “It is our responsibility both to minimise the environmental impact and to provide clients with the most efficient and durable construction methods and materials.”

Arch and Godfrey leads by example: the renovation and expansion of their own offices from 2014 to 2015 incorporated numerous environmentally conscious measures, including durable ICF construction, a solar array that meets the majority of the building's energy needs, energy-efficient, hurricane-rated glass in the windows, and LED lighting. As a result, the new offices were awarded LEED Platinum certification – the highest certification available for sustainable design and construction and the first and only such certification in Cayman – and provided a working model for how such measures can both enhance the wellbeing of occupants and reduce environmental impact.

The company is also building Periwinkle, the Cayman Islands' first LEED Gold-certified residential community. Located at Grand Harbour, these contemporary Cayman-style homes are highly insulated and energy-efficient to ensure low utility costs, built with toxin-free materials to promote indoor air quality, and set within sustainable, native landscaping.

As the company celebrates its 50th year, Arch and Godfrey is honoured to have been selected as the contractor for The Watermark, the most luxurious condominium development yet to be built in the Cayman Islands. Spanning nine acres on either side of West Bay Road, this project will include 54 exclusive beachfront residences connected by an overpass bridge to an inland site with a spa, restaurant, guest accommodations and other amenities. This unparalleled project is testament to the trust that Arch and Godfrey has established with the developer since they began working together 28 years ago. Together, the team looks forward to creating what will be a game-changer for luxury residences across the Caribbean.

Now under the leadership of Garth Arch, the company faces the future with optimism. Arch and Godfrey will remain focused on providing construction services for projects of a wide range of type, size and complexity, and to uphold its working relationships with absolute integrity. Together, the whole team at Arch and Godfrey looks forward to continuing its tradition of excellence in construction for many years to come.



STAFF PAST & PRESENT

Arch and Godfrey owes much to many, and none more so than the dedicated individuals who have formed part of the team over the years. We wouldn't be where we are today without you. To each and every one of you, past and present, who have contributed to making Arch and Godfrey what it is today, we offer our heartfelt thanks.

Gordon Alexander	Anthony DeGuzman	Fitzroy Levene	Sheik Sataur
Andylyn Anderson	Byron Dunn	Stephen Maclaren	Richard Saxton
Nicholas Anderson	Chris Duty	Marlon Marshall	Dan Scott
Arthur Arch	James Ebanks	Shawn Maxwell	Lloyd Scott
Beryl Arch	Martin Ebanks	Andrew McBean	Ed Shelly
Juliette Arch	John Edwards	Breandon McDonnell	Bob Sheppard
Terry-Ann Arch	Dave Erb	Eoin McGrath	Dave Smith
Lee Attebury	John Elliot	James McVey	Kevin Snider
Frank Barnks	Dave Forrest	Andrew Mellaneo	Kenneth Spraggon
Carleigh Bell	George Foster	Junior Messervier	Leighton Stanley
Lloyd Black	Alex Frederick	Joel Mislos	Mitch St. Clair
Maurice Blanchard	Bobby Frederick	Fitzroy Monroe	I. Stoney
Davin Borden	Tony Frederick	John Moore	Andy Thomas
Daniel Brassard	Dean Gaffigan	Radley Motrille	George Thomas
Delano Bush	Ryan Galloway	John Myles	Anthony Thomlinson
Joan Campbell	John Gibson	Olaya Newball	Paul Van Rensburg
Anthony Chisholm	Howard Gregory	Danny O'Hara	David Walker
William Chisholm	Roger Hall	Anthony Pandohie	Geffory Walton
Lorraine Clancy	Dave Hanlon	Dudley Parsons	Victor Waring
Chris Coen	Elliot Harvey	Alastair Patterson	Reg Watson
William Coley	James Harvey	Christopher Price	Julian Webster
Neuville Cover	James Hayes	Robert Railey	Peter Widmer
Simon Dargis	Geoffrey Hunter	Elsmer Range	Collin Wilson
Matthew Darnton	Dermot Johnson	Udith Rankine	Niven Wood
Ian Davis	Norris Jackson	Ronald Rivera	Ralph Wright
Roy Davis	Matthew Leon	Dominique Powell	Keysha Wynn

* The above list is not comprehensive, and we extend our gratitude to each of the professionals with whom we have had the pleasure of working these past five decades.



1972-1988

39

PAST PROJECTS

A selection of 50 projects over 50 years

1972-1989

OWEN ROBERTS INTERNATIONAL TERMINAL

1984

Client/Developer: Cayman Islands Airport Authority

Architect: APEC - Jeremy Sibley and Arek Joseph, CGMJ

A&G lead staff:

David Forest

John Gibson

John Elliot

Llyod Black

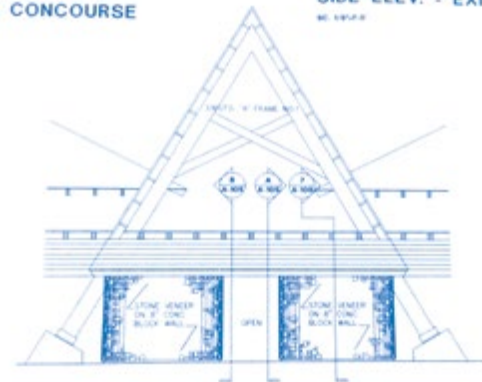
Elsmer Range

Gordon Alexander

John Moore

LOBBY AT
TING CONCOURSE

SIDE ELEV. - EXIT LOBBY

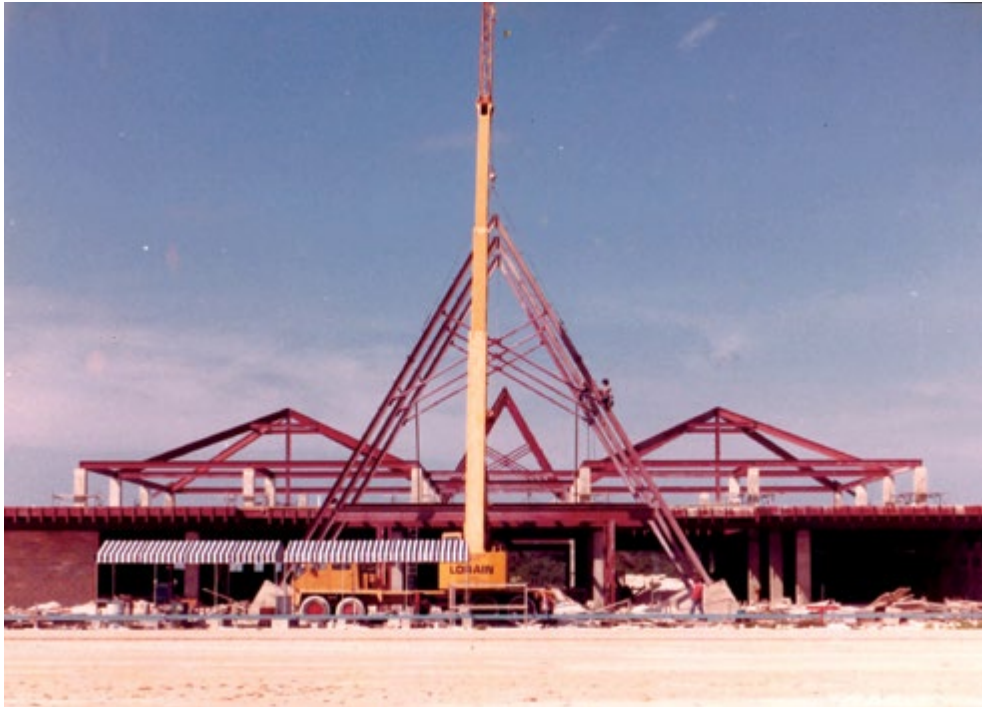


NORTH ELEVATION - 'A' FRAME NO.1

NO. 107/107

The contract to redevelop the Owen Roberts International Airport was Arch and Godfrey's first Government contract and remains one of their proudest achievements. Constructed in 1984, the project was completed four months ahead of schedule, and came in under budget. The 100,000 square foot terminal had a steel-framed structure, concrete floors and block walls, enhanced with exterior coral stone and cedar wood. The two distinctive A-frame roofs housed spacious arrival and departure concourses, immigration and security offices, a VIP lounge, restaurant and cocktail bar, an exchange bank and duty-free shops.





CAYMAN COVES

1980

Client/Developer: Pelican Securities Ltd.

Architect: Marvin Goodman & Associates

A&G lead staff:

Howard Gregory

Lloyd Scott

Situated next to Smith Cove beach, Cayman Coves is a boutique group of eight Mediterranean-style condominiums constructed in 1980.





ARTEMIS HOUSE & CLIFTON HOUSE

1981 ORIGINAL BUILD, 2002 EXPANSION Previously known as Bank of America and Hunter and Hunter

Client/Developer: Commercial Properties Ltd.

Architect: Rutkowski Baxter and Partners

A&G lead staff:

Olaya Newball

Danny O'Hara

Bob Sheppard

Peter Widmer

Now known as Artemis House, the neoclassical two-storey building on Fort Street in George Town was originally named the Bank of America building. The 20,000 square foot office space was completed in 1981. Five years later, the original Hunter and Hunter building was constructed in a similar style, and a second 8,000 square foot building was added in 2002. Both Clifton House and Artemis House are now home to Appleby law firm.



LACOVIA

1983

Client/Developer: Commercial Properties Ltd.

Architect: Arch and Godfrey Design/Build

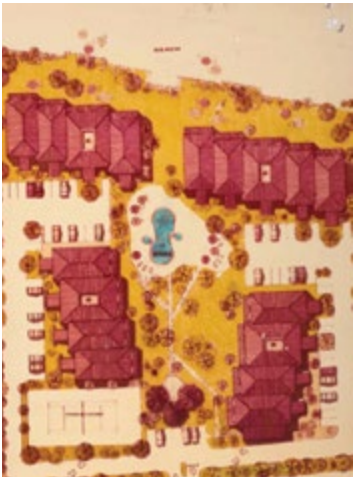
A&G lead staff:

John Moore

Elsmer Range



Occupying a spectacular 400-foot stretch of Seven Mile Beach, Lacovia was one of the earliest developments to be built on this world-famous beach. Completed in 1983, the low-density development offered unparalleled luxury for the time: generous gardens, a pool, hot tub, sauna, floodlit tennis court, fitness centre and meeting facilities. The 55 one- to three-bedroom units have either pool or sea views; ground floor units have private patios, while the units above have balconies.



OCEANSIDE PLANTATION

1985

Client/Developer: Oceanside Plantation Ltd.

Architect: James Ruyle, A.I.A.

A&G lead staff:

John Elliott

Oceanside Plantation is an oceanfront residential development serving both residents and visitors on North West Point Road in West Bay. Designed in traditional Caymanian style, the development consists of five buildings offering a mix of one- and two-bedroom units, some with additional loft spaces.





GENESIS BUILDING

1986

Client/Developer: Genesis Ltd.

Architect: OBMI

A&G lead staff:

Gordon Alexander

Dave Forest

John Gibson

John Elliot

Elsmer Range

The Genesis building in central George Town, built in 1986, was the first energy-efficient project to be taken on in the Cayman Islands. Designed to reduce maintenance and utility costs, the two towers now house a variety of small and large businesses in office suites of various sizes.



VILLAS PAPPAGALLO

1986

Client/Developer: Hunza Development Ltd.

Architect: Malcolm Stephenson

A&G lead staff:

Gordon Alexander

Colin Wilson

John Elliot

Olaya Newball

Villas Pappagallo is a 32 unit condominium development located on a private, sandy beach on the northwest shore of Grand Cayman, adjacent to Barkers National Park. The three-storey Mediterranean-style development was completed in 1986 and includes one- and two-bedroom condos built around landscaped gardens, with a freshwater pool and hot tub. Ground floor units have private patios, first and second floor units have balconies, and all units enjoy ocean views.



The men behind Villas Pappagallo: [l to r] Gordon Alexander, David Challice, Ken Spraggon, John Elliott, Heber Arch, Peter Fedele and Adrian Bertolotti celebrating roof on Phase II. Completion scheduled, for February, 1982.



LAGUNA DEL MAR

1988

Client/Developer: Laguna del Mar Ltd.

Architect: Malcolm Stephenson

A&G lead staff:

Bob Sheppard

Roger Hall

Ralph Wright

Elsmer Range

Ed Shelly

John Gibson

Roy Davis

Geffory Walton

Situated at the southern end of Seven Mile Beach, Laguna del Mar was named after the large, tranquil natural lake on its eastern side. The luxury 35 unit condominium development features 24 beachfront apartments and 11 lake view townhouses, all of which have a garage and spacious floorplans. The development also includes a pool, with shady cabanas and barbecue area, a gym and a tennis court.



WHITE HOUSE

1988 Previously known as Ansbacher House and DMS House

Client/Developer: Commercial Properties Ltd.

Architect: Rutkowski Baxter and Partners

A&G lead staff:

Gordon Alexander

John Elliott

Elsmer Range

Originally known as Ansbacher House, then renamed DMS House and now known as The White House, the three-storey building with a classic white portico provides Class A office space in the heart of George Town. The spacious, modern interiors include 350 workstations and dozens of office suites, within walking distance of the downtown attractions.



KIRK SUPERMARKET

1989

Client/Developer: Kirkconnell Brothers Ltd.

Architect: Planmark Architecture/Engineering

A&G lead staff:

Ed Shelly

Bob Sheppard

Elsmer Range

When Kirk Supermarket was completed in 1989 it was the largest single-storey building in the Cayman Islands. Agreed on nothing more than a handshake, Arch and Godfrey completed the sizeable project in just ten months, and brought it in under budget. Designed with wide aisles for customer comfort, facilities include meat and fish sections (including a large lobster tank - an innovation for the island), a deli, bakery, pharmacy and frozen food section.





APOLLO HOUSE

1989 ORIGINAL BUILD, 2001 EXPANSION Previously known as Walker House

Client/Developer: Commercial Properties Ltd.

Architect: Rutkowski Baxter and Partners

A&G lead staff:

John Gibson

Andrew McBean

I. Stoney

Elsmer Range

Bob Sheppard

Olaya Newball

Geffory Walton

Arch and Godfrey constructed the original Walker House on Mary Street, in the business district of George Town, in 1989. The 30,000 square foot office space for renowned law firm, Walkers, features a distinctive portico and street level parking with offices above. In 2001, Arch and Godfrey completed an adjacent 20,000 square foot office space.



1990s

PAST PROJECTS

A selection of 50 projects over 50 years

1990s

THE COMMONWEALTH

1990

Client/Developer: Talmage Tinsley

Architect: Townscape Architects

A&G lead staff:

John Gibson

Bobby Frederick

Elsmer Range

Tony Frederick

Completed in 1990, the Commonwealth condos are particularly spacious residences, occupying a prime beachfront position. All 12 condos, which range in size from 3,000 to 4,000 square feet, have three bedrooms, a private patio or balcony and fully equipped kitchens, and residents share a freshwater swimming pool, hot tub and tennis court.



CAYMAN PREP & HIGH SCHOOL

1991 HIGH SCHOOL STRUCTURE

Client/Developer: United Church of Jamaica Cayman Islands

Architect: OBMI

A&G lead staff:

Bob Sheppard

Ralph Wright

The Cayman Prep and High School was built by Arch and Godfrey in 1991. Owned and operated by the United Church in Jamaica and the Cayman Islands, its mission is to provide an education rooted in Christian principles. The project consisted of two buildings with a total floor area of approximately 18,000 square feet: a two-storey building that housed the classrooms and administration for the high school departments, and a single-storey multipurpose hall. Located in George Town, Cayman Prep School and High School has been serving the Cayman Islands for over 73 years.



HARBOUR CENTRE

1992

Client/Developer: Cayman Commercial Developments Ltd.

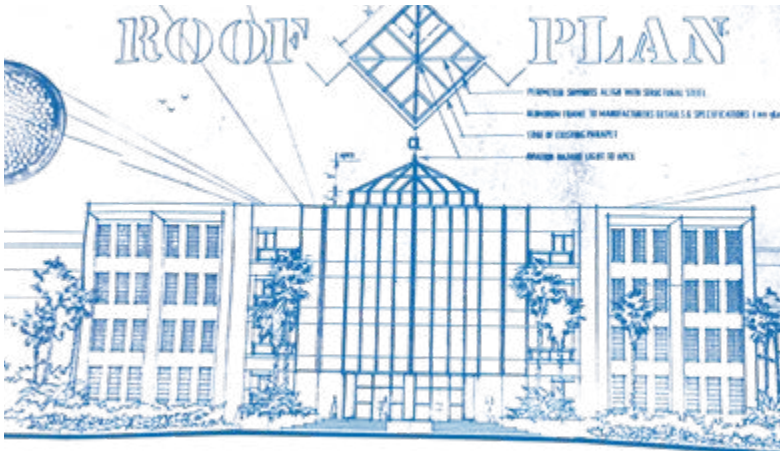
Architect: Rutkowski Baxter and Partners

A&G lead staff:

John Elliott

Bob Sheppard

The glass-fronted, four-storey Harbour Centre stands on North Church Street in George Town offering spectacular sea views from the offices within. Built in 1992 it offers 40,000 square feet of office space which is currently leased out to firms in the banking, real estate, law and funds administration sectors.



MORRITT'S TORTUGA CLUB

1995 ORIGINAL BUILD

Client/Developer: Morritt's Tortuga Ltd.

Architect: Chalmers Gibbs

A&G lead staff:

Gordon Alexander

Bob Sheppard

Elsmer Range

Morritt's Tortuga Club, the popular beachfront time share resort in East End, consisted of several three storey buildings housing one and two-bedroom guest units.





CAYMAN AIRWAYS HANGAR

1995

Client/Developer: Cayman Airways Ltd.

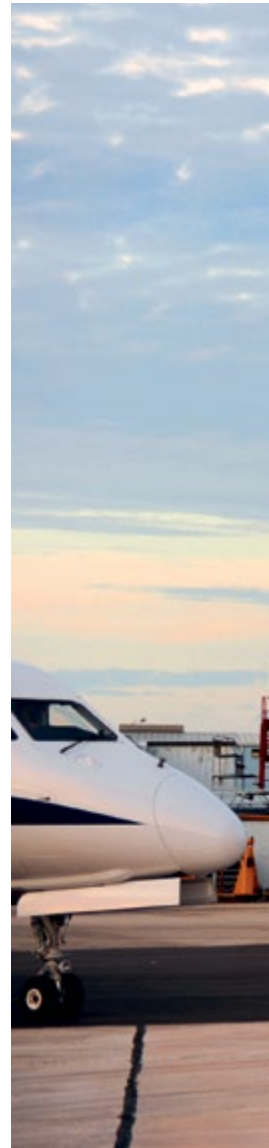
Architect: Malcolm Stephenson

A&G lead staff:

Bob Sheppard

Ralph Wright

The Cayman Airways hangar was built to provide a sheltered area large enough to accommodate aircraft for maintenance purposes, for the national airline of the Cayman Islands. The vast structural steel building was constructed in 1995.





QUEEN'S COURT SHOPPING CENTRE

1995

Client/Developer: Queen's Court Ltd.

Architect: Rutkowski Baxter and Partners

A&G lead staff:

Peter Widmer

John Elliott

This two-storey shopping plaza, covering approximately 36,000 square feet with ample parking space, is located at the southern end of West Bay Road. Constructed in 1995, it houses a mix of retail stores, restaurants, bars, a pool hall, a medical clinic and a pharmacy.





GRANDVIEW

1997

Client/Developer: Cayman Overseas Group Ltd.

Architect: Chalmers Gibbs

A&G lead staff:

John Elliot

Dave Smith

Bobby Frederick

The luxury condominiums at Grandview were completed in 1997 and sold out prior to opening. Located at the southern end of Seven Mile Beach, the low-rise development comprises 69 two- and three-bedroom residences, all of which enjoy sea views, direct beach access and private patios or balconies. The development includes a 104-foot beach-side pool surrounded by a sun deck, lush lawns, a hot tub, fitness centre and two tennis courts.





REGAL BEACH CLUB

1998

Client/Developer: Cayman Overseas Group Ltd.

Architect: Chalmers Gibbs

A&G lead staff:

Peter Widmer

John Elliot

Andrew McBean

Dave Smith

Bobby Frederick

Built along either side of a long, manicured garden that leads down to white sands of Seven Mile Beach, Regal Beach Club comprises 57 high end vacation villas. All units enjoy ocean views, private balconies or patios, and off-street parking. Resort amenities include two freshwater pools, a hot tub, tennis court and fitness room.



THE PINNACLE

1999

Client/Developer: Cayman Overseas Group Ltd.

Architect: Chalmers Gibbs

A&G lead staff:

Peter Widmer

Andrew McBean

John Elliot

Dave Smith

Elsmer Range

Bobby Frederick

One of Cayman's most luxurious condominium developments, The Pinnacle was constructed in 18 months, opening in 1999. Occupying four acres with 450 feet of pristine beachfront, the development offers 45 high spec, sea view apartments. Conceived for discerning buyers, and offering a level of comfort not previously seen in Cayman, the development heralded a new era for residential real estate in the Islands. Private garages, a freshwater swimming pool, tennis court, and common room with a bar and lounge are among the amenities owners can enjoy.



GRAND HARBOUR SHOPPING CENTRE

1999

Client/Developer: Cayman Grand Harbour Development Ltd.

Architect: HHCP Design International Inc.

A&G lead staff:

John Elliott

Bob Sheppard

Located in Red Bay, construction of the Grand Harbour Shopping Centre provided a recreational and retail hub for a growing residential community. Arch and Godfrey completed the 80,000 square foot space, that houses a grocery store, restaurants, offices, fitness centre and pharmacy, in 1999.





2000s

PAST PROJECTS

A selection of 50 projects over 50 years

2000s

HAMPTON BY HILTON GRAND CAYMAN

2000 Previously known as Comfort Suites Hotel

Client/Developer: Seven Mile Suites Ltd.

Architect: The Burns Conolly Group

A&G lead staff:

Peter Widmer

Andrew McBean

Bob Sheppard

Bobby Frederick

Ralph Wright

One of the first wheelchair-accessible hotels built in Cayman, Comfort Suites was completed in 2000. It took Arch and Godfrey just nine months to construct the 108 suite hotel. Conceived for guests who prefer the option of self-catering, accommodation options included a mix of one- and two- bedroom suites with full kitchens – two of which are adapted for wheelchair users – and studios with partial kitchens. Situated on West Bay Road with easy access to Seven Mile Beach, the resort includes a restaurant and bar, a well-landscaped pool and deck, as well as a fitness room, laundry facilities and a creche.



SUNSHINE SUITES

2000

Client/Developer: Glen Bartosh and Bob Clemens

Architect: The Burns Conolly Group

A&G lead staff:

Dean Gaffigan

John Gibson

Bobby Frederick

Elsmer Range

Sunshine Suites Resort, an affordable boutique hotel, was completed in 2000. It took Arch and Godfrey nine months to build the four-star resort. Ideally located a short walk from a pristine stretch of Seven Mile Beach and down the road from the North Sound Golf Course, the resort offers 131 suites with fully equipped kitchens, a breezy open air restaurant, a fresh water swimming pool and sun deck.



STRATHVALE HOUSE

2001

Client/Developer: Gyst Ltd.

Architect: OBMI

A&G lead staff:

Dean Gaffigan

John Gibson

Bobby Frederick

William Chisholm

Paul Van Remsburg

Strathvale House is a five-storey office building on the waterfront in George Town. Completed in a 12 months, the building includes 66,000 square feet of open plan and private offices, reception spaces and meeting rooms with sea views. There are also balconies on every floor and ample parking. The building's original anchor tenant was Price Waterhouse Coopers.



LIGHTHOUSE SCHOOL

2001

Client/Developer: Ministry of Education

Architect: OAD

A&G lead staff:

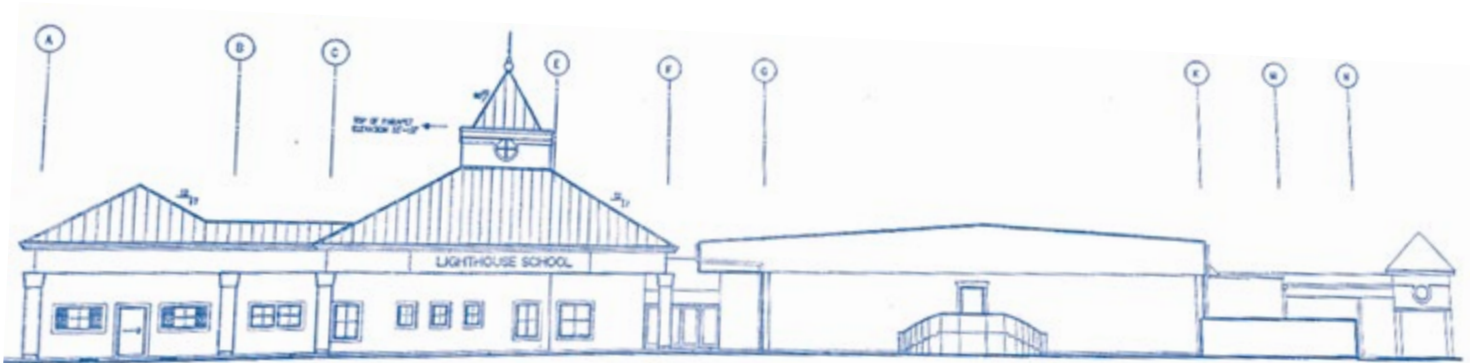
Dean Gaffigan

Bob Sheppard

Dave Smith

Paul Van Remsburg

The Lighthouse School caters to primary and secondary school students with moderate to profound special education needs. Arch and Godfrey completed the 42,000 square foot purpose built facility in Red Bay in 2001. The school project included a single-storey building that housed classrooms and administration and a separate single-storey multipurpose hall, with a kitchen and canteen. The Lighthouse School is owned and operated by the Government of the Cayman Islands.



WYNDHAM REEF RESORT PHASE 1

2002 Previously known as Cast-Away Cove

Client/Developer: Thompson Resort Ltd.

Architect: OBMI

A&G lead staff:

Dave Erb

I. Stoney

Arch and Godfrey constructed the first phase of what was originally known as Castaway Cove, and is now renamed The Wyndham Reef Resort. Situated on the beachfront in East End, the initial phase involved the construction of guest a number of studios with kitchenettes, and one-bed bedroom and two-bedroom condos with full kitchens, dining areas and living rooms.



KAIBO YACHT CLUB PHASE 1

2002

Client/Developer: Foster Brothers

Architect: Chalmers Gibbs

A&G lead staff:

Andrew McBean

Bob Sheppard

Elsmer Range

Located at Cayman Kai in North Side, the Kaibo Yacht Club condos is a peaceful complex of 30 condos situated on a white sand beach. Surrounded by tropical landscaping the spacious residences all feature two-bedrooms and have use of a shared pool and deck. Arch and Godfrey completed Phase 1 of the Kaibo Yacht Club condos in 2002.





BAYSHORE MALL

2004

Client/Developer: Kirk Freeport Ltd.

Architect: The Burns Conolly Group

A&G lead staff:

Andrew McBean

Julian Webster

Andy Thomas

Bobby Frederick

With over 50,000 square feet of prime retail space, Bayshore Mall is a premier shopping destination in Grand Cayman. It is home to Kirk Freeport's flagship store and a host of world-class luxury purveyors of jewellery, perfume, watches and more. Catering to both residents and visitors, it is a short walk from the cruise port and offers convenient private parking for customers. Arch and Godfrey completed Bayshore Mall in 2004.



GOVERNOR'S SQUARE & COST-U-LESS

2005

Client/Developer: Governor's Square Ltd

Architect: OBMI

A&G lead staff:

Andrew McBean

Bob Sheppard

Bobby Frederick

Situated across the road from the Governor's official residence, Governor's Square is a 120,000 square foot corporate and retail centre surrounding a central parking area. The project included construction of Cayman's first Cost-U-Less, a 45,000 square foot wholesale and retail store. Completed in nine months and opening in December 2005, Governor's Square quickly became a popular and accessible place for residents to shop, work, dine and do business.





ONE TECHNOLOGY SQUARE

2004/ 2005

Client/Developer: Cable and Wireless

Architect: OBMI

A&G lead staff:

Dean Gaffigan

Delano Bush

Dermot Johnson

Arch and Godfrey commenced work on the new headquarters for Cable & Wireless, one of Cayman's leading telecommunications providers, in 2002. The three-storey, reinforced concrete building was engineered to withstand 200 mph winds - the first of its kind in Cayman. The structure added approximately 37,000 square feet of space, which allowed for a state-of-the-art exchange facility and the relocation of vital components from the company's older buildings to a new, custom-built space. A vast amount of additional work was incorporated into the scope to allow for office fit-outs on the first and third floors, and the complete renovation of the existing Co-Ax Building, including upgrading the roof to the same 200 mph rating as the new building. The Co-Ax building houses sensitive equipment that controls all international data for Cayman and the computer data systems responsible for billing. All of this equipment remained in-situ and operational 24 hours per day, 7 days per week, for the duration of the works which required daily inspections and method statements to ensure the uninterrupted business of the whole Exchange.



THE WATERS EDGE

2007

Client/Developer: Cayman Overseas Group Ltd.

Architect: Chalmers Gibbs

A&G lead staff:

Peter Widmer

Dave Hanlon

Mitch St. Clair

Dermot Johnson

Dan Scott

Kevin Schnider

The Waters Edge, an exclusive condominium development on Seven Mile Beach, set a new benchmark for luxury living in the Cayman Islands when it was completed in 2007. With 300 feet of beachfront shared between just 35 luxury residences, it was designed to offer an unprecedented lifestyle. The private residences, which range in size from 3,200 to 11,500 square feet, feature high ceilings, floor to ceiling windows, gourmet kitchens and flawless finishes. The development includes underground parking and the entire ground floor provides shared amenities including an owners' lounge, games room, fitness centre and treatment rooms, with a three-tier beachfront pool. Water's Edge offers outstanding quality, attention to detail, and unparalleled sunset views.



THE RENAISSANCE

2007 Structure Only

Client/Developer: Brian Butler

Architect: Hoffman and Butler Design Group

A&G lead staff:

Dean Gaffigan

Chris Duty

Delano Bush

When The Renaissance opened its doors in 2010, following a three-year redevelopment, it was the only luxury vacation rental property on the quiet northern end of Seven Mile Beach. The seven-storey development, served by two lifts, comprises a total of 37 two-, three- and four-bedroom condos, all offering large sea-side terraces and exquisite views. The development occupies a 200-foot stretch of beach and amenities include an 85-foot infinity edge pool and hot tub, a beach-side patio with barbecue areas, a private fitness centre and underground parking.



SEAVIEW RESIDENCES

2008

Client/Developer: Bronte

Architect: Kariba

A&G lead staff:

Dean Gaffigan

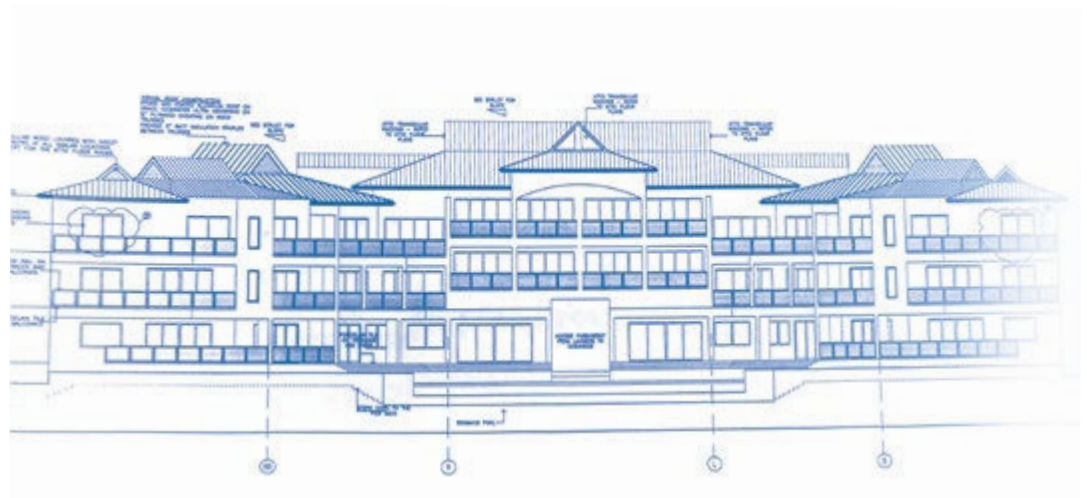
Elliot Harvey

Loraine Clancy

Reg Watson

Dan Scott

Located on South Church Street, on the site of the former SeaView Hotel, these upscale residences offer privacy and sophisticated oceanfront living, minutes from George Town. The contemporary design of The SeaView Residences forms half a hexagon, surrounding a spectacular ocean's edge infinity pool, ensuring all homes enjoy panoramic views. Completed in 2008, the low-rise, boutique development comprises 18 apartments with private, shady terraces, and beautifully-finished open concept interiors with sleek, modern kitchens and bathrooms, and spacious bedrooms.





SMITH ROAD CENTRE

2009

Client/Developer: TPC Ltd.

Architect: Whittaker and Watler

A&G lead staff:

Pete Widmer

Dave Hanlon

Mitch St. Clair

Located minutes from central George Town, Smith Road Centre comprises 45,000 square feet of first class office space leased by insurance, medical, financial and Government tenants. A structural framed building with concrete block walls, a concrete roof, impact-resistant windows, full power recovery, a high-efficiency air-conditioning system and security and fire control systems, make it a hurricane-resilient building.



2010s

PAST PROJECTS

A selection of 50 projects over 50 years

2010s

WORLD GYM

2012

Client/Developer: The Plaza Ltd.

Architect: Kariba

A&G lead staff:

Peter Widmer



Arch and Godfrey built World Gym in 2011. The 11,000 square foot facility includes cardio machines and free weights areas, studios for group classes, changing rooms and showers, an on-site cafe, a pro-shop and more.



SCOTT'S MARINE AND BOAT SHOWROOM

2012

Client/Developer: Barcadere Marina

Architect: Chalmers Gibbs

A&G lead staff:

Andrew McBean

Bob Sheppard

Nicholas Mellaneo

James Harvey

Scott's Marine is a full service marine centre located within The Barcadere Marina, on the shores of the North Sound. The 16,000 square foot facility includes a chandlery, service centre and a 6,000 square foot air-conditioned boat showroom - possibly the only one of its kind in the Caribbean. The facility has a poured architectural concrete frame which was constructed with a specially designed "self-consolidating" concrete mix that was created specifically for this job. The project commenced in late 2010 and was completed in 14 months. Scotts Barcadere went on to win the Governor's Award for Design and Construction Excellence in 2013.





PINES RETIREMENT HOME

2013

Client/Developer: The Pines Retirement Home

Architect: Chalmers Gibbs

A&G lead staff:

Dean Gaffigan

Andrew McBean

Bob Sheppard

John Elliot

Bobby Frederick

Work on the new Pines Retirement Home, a three-story building adjacent to the existing Pines Facility, commenced in early 2010. The existing facility remained fully operational throughout construction and Arch and Godfrey provided temporary space as required to allow The Pines to carry on with minimal disruption. The project was carried out in three phases, in accordance with The Pines' available budget. The first phase was limited to taking down part of the old building and constructing the shell and envelope of the new 20,000 square foot structure. Phase two, which commenced in May 2011, included fitting out interior spaces on the bottom two floors, building a new front entrance, and renovating the existing dining room. The Pines moved into their new facility in July 2012 and took possession of the renovated dining room and third floor office in December 2012. The final phase commenced in March 2013 and included the demolition of the old Pines building, the renovation of the existing kitchen, and the creation of a new space for a store, pantry, walk-in refrigerator and laundry.





NO PARKING
PICKUP AND
DROP OFF ONLY

APPLEBY TOWER

2013

Client/Developer: Acorn Properties Ltd.

Architect: Rutkowski Baxter and Partners
with Andrew Gibb and Rodney Frederick

A&G lead staff:

Andrew McBean

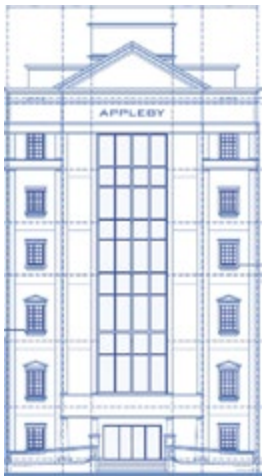
Bob Sheppard

James Harvey

Shawn Maxwell

John Elliot

When Appleby Tower was completed in 2013, the six-storey edifice was one of the tallest buildings in George Town. Standing between the law firm's two existing buildings, Clifton House and Artemis House (also built by Arch and Godfrey) it brings Appleby's total office space to 80,000 square feet. The bold addition features an innovative glass façade which floods the interior with natural light - one of several energy-saving, environmentally-responsible features of the building. Others include energy-efficient lighting and air-conditioning, and water conservation measures. Top floor meeting rooms and a rooftop entertainment deck with panoramic views are among the highlights of the tower.





THE WATERCOLOURS

2014

Client/Developer: The Watercolours Ltd.

Architect: John Redmond Associates Ltd. / MJM Design Studio

A&G lead staff:

Dean Gaffigan

Dave Hanlon

Elliot Harvey

Mitch St. Clair

Maurice Blanchard

Arch and Godfrey was selected by the developer as the main contractor for The WaterColours Condominiums, successfully completed in 2014. The first ten-story building in the Cayman Islands, The WaterColours is comprised of 60 ultra-luxurious private ocean residences and is one of the most prestigious residential developments on Seven Mile Beach. Built to the highest standards, residences range from 3600 to 7200 square feet, all with glass balconies that afford expansive ocean views. The extensive list of amenities includes a beachfront owners' conservatory complete with a chef's kitchen and private wine storage, owners guest suites, conference facility, state-of-the-art fitness studio, beachfront continuous infinity-edge pool, private under-building parking and valet parking.





CASA LUNA

2014

Client/Developer: Javelin Holdings Limited

Architect: Arco - Eduardo Bernal

A&G lead staff:

Andrew McBean

James Harvey

Ryan Galloway

Nicholas Mellaneo

Ian Davis

Shawn Maxwell

Casa Luna is a boutique community of 18 free-standing villas positioned at varying elevations across four acres of verdant, park-like grounds, to maximise sea views. Inspired by Mediterranean architecture and connected by natural stone paths and courtyards, the three- and four-bedroom homes feature shady terraces and terracotta roofs. The lush landscaping includes ponds, bridges and waterfall features which lead to a private, sandy cove, and amenities include an infinity pool and oceanside cabanas, a gym, parking terraces, a private dock and a clubhouse. Completed in 2014, the inspired design and quality construction earned this resort-style development multiple awards at the International Property Awards.





ED BUSH STADIUM CHANGING ROOM FACILITIES

2014

Client/Developer: Ministry of Sports

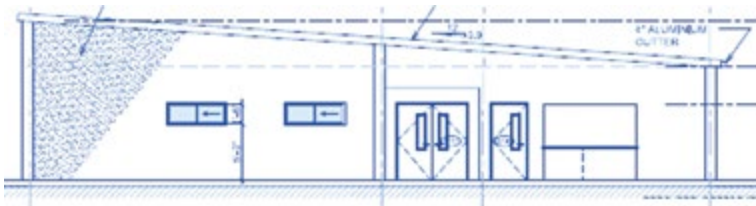
Architect: Arch and Godfrey Design/Build with DDL Studios

A&G lead staff:

Dean Gaffigan

Delano Bush

The Ministry of Health, Sports, Youth and Culture contracted Arch and Godfrey to design and build the changing room facility at the Ed Bush Stadium in West Bay in January 2014. The time-frame for this project was particularly short: planning permission was granted in February, construction commenced in April, and the project was completed by July of the same year. The 6,000 square foot facility includes two team dressing rooms with showers and bathrooms, press conference rooms, players' medical room, coaches' room, doping control room, referees' room, VIP reception and a concession booth. The poured concrete metal deck roof also provides for the addition of stadium seating in the future.





CAYMAN BRAC BEACH RESORT

2015 Previously known as Cayman Brac Reef Resort

Client/Developer: Brac Reef Resort

Architect: Eddie Thompson

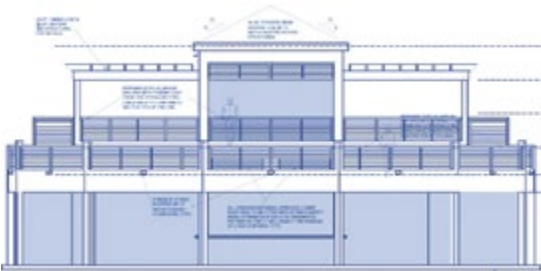
A&G lead staff:

Dean Gaffigan

Ryan Galloway

Ian Davis

The Cayman Brac Beach Resort renovated its pool and bar in 2015. The project started in September 2015 and was completed in just four months, enabling the resort to reopen in time for the tourist season in December 2015. Arch and Godfrey demolished the existing pool and bar and rebuilt a large, free form pool with a beach entry and hot tub, surrounded by a sun deck, and an adjacent two-storey bar. This project included updates to the landscaping, waste water and storm water management systems.





ARCH & GODFREY HEAD OFFICE

2015

Client/Developer: Heber G. Arch

Architect: Trevor Baxter and Andrew Gibb

A&G lead staff:

Andrew McBean

James Harvey

Bob Sheppard

Nicholas Mellaneo



Located on Mary Street in George Town, The Arch and Godfrey office building was completed in 2015.

The project included the renovation of a traditional 100-year old Caymanian house and a modern 4,000 square foot addition. The renovation was designed to preserve this example of local architectural heritage while setting an example for building to the highest environmental standards. Thus, original wood floors, beadboard walling and internal doors were restored, and hurricane-rated glass was set into original window frames. The modern addition, while incorporating the same architecture and aesthetics, is a Class A office building. Environmental sustainability was a key driver for both the renovation and the new build, and a host of features, including a solar system by SunPower, high energy efficiency ratings, natural lighting, native landscaping, LED lighting, and a cistern for harvesting rainwater, were incorporated. With the structural integrity to withstand Category 5 hurricanes, the office also serves as a hurricane shelter for staff. Arch and Godfrey's office building was awarded the LEED Platinum certification in recognition of its environmentally-responsible design and operations, and it won the award for Best Office Development in the Cayman Islands at the 2015 International Property Awards.





ARCH & GODFREY, HEAD OFFICE – 2021 GOVERNOR'S AWARD RECIPIENT FOR DESIGN AND CONSTRUCTION EXCELLENCE IN THE CAYMAN ISLANDS.



ORIA REDEVELOPMENT PHASE 1

2016 New Terminal

Client/Developer: Cayman Islands Airport Authority

Architect: Chalmers Gibbs

A&G lead staff:

Andrew McBean

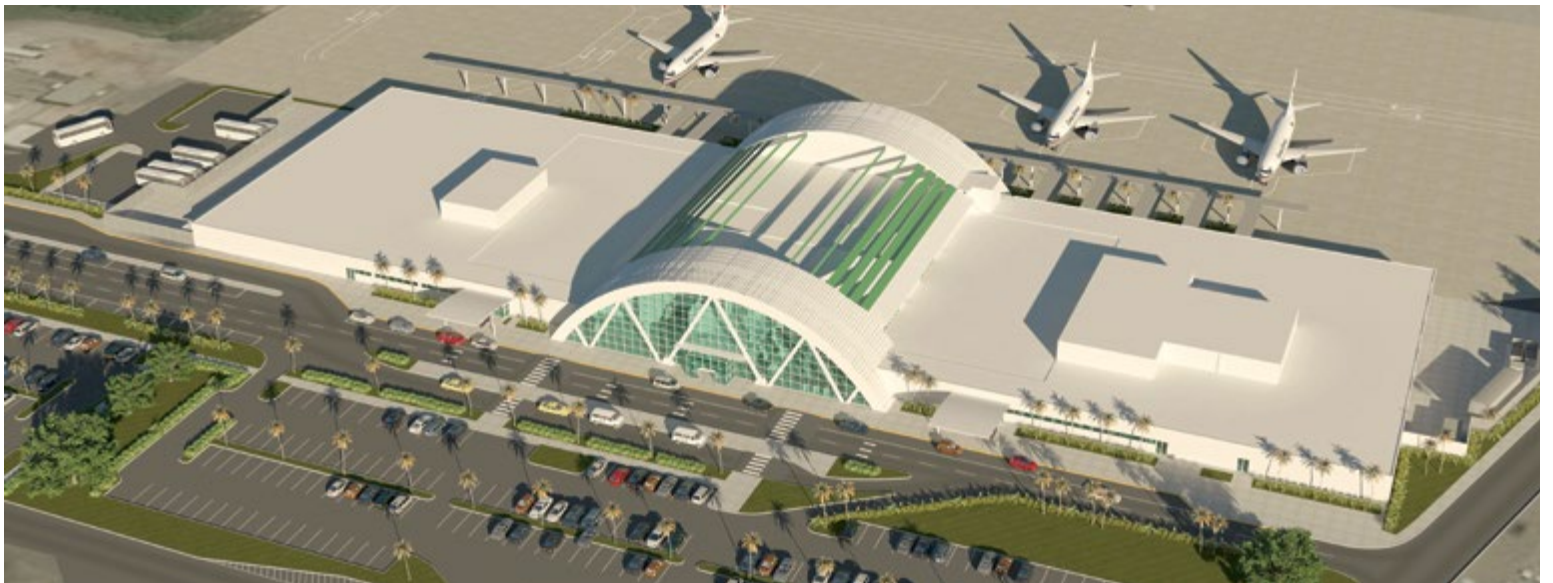
Dave Hanlon

James Harvey

Mitch St. Clair

The phased redevelopment and expansion of the Owen Roberts International Airport began in 2015. As part of Phase 1, Arch and Godfrey was contracted to build a 25,000 sq. ft. addition comprised of a structural steel frame and poured solid concrete block walls. This addition was constructed while the airport remained in operation. Strict safety plans, security access and method statements were all implemented with coordination involving Public Works Department and Cayman Islands Airport Authority.





THE WESTIN GRAND CAYMAN SEVEN MILE BEACH RESORT & SPA

2016 Renovations

Client/Developer: The Westin Grand Cayman

Architect: Garcia Stromberg and Andrew Gibb

A&G lead staff:

Dean Gaffigan

Dave Hanlon

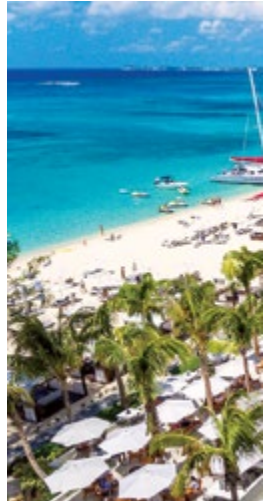
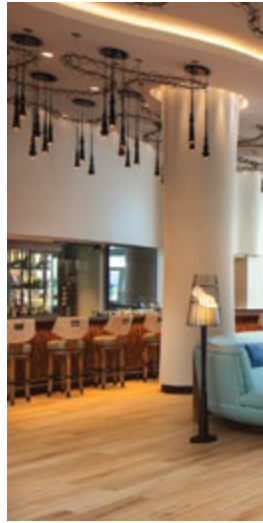
Ryan Galloway

Dominique Powell

Mitch St. Clair

Elliot Harvey

Arch and Godfrey completed the first phase of a major renovation of The Westin Grand Cayman Seven Mile Beach Resort and Spa in 2016. This involved the refurbishment of 13,000 square feet of public spaces, in order to introduce a more contemporary aesthetic and a fresh design palette, which would enhance the guest experience. The lobby and reception were completely redesigned to create an open, welcoming space, retail stores were fitted out, washrooms modernised and relocated, the fitness centre refurbished and a new coffee shop selling grab-and-go snacks was built. Outdoors, the pool was expanded and a swim-up bar added, sun decks were redesigned, and towel huts, hot tubs and washrooms refreshed. An additional 3,500 square foot administration building was also constructed and fitted out in the same phase. Arch and Godfrey worked within an extremely tight schedule, completing all demolitions and restorations between July and December of the same year, and the hotel remained operational throughout.





CAYMAN FIRST INSURANCE CENTRE

2018

Client/Developer: Cayman First Ltd.

Architect: Arcop Ltd. and Malcolm Stephenson

A&G lead staff:

Andrew McBean

James Harvey

Shawn Maxwell

Nicholas Mellaneo

Completed by Arch and Godfrey in 2018, the Cayman First Centre is the head office for Cayman First Insurance. A Class A office space, it was built with the highest quality materials and construction methods - including solid poured concrete and high velocity impact rated windows and doors - and is able to withstand Category 5 hurricanes. The two-storey, 28,000 square foot space includes a boardroom, fireproof high-density filing room, server room with raised access flooring, two lobbies, five washrooms, three kitchens and a training centre. The project also includes a separate vehicle inspection bay and 102 KWP of solar panel canopies.





OTISAIR OFFICES & WAREHOUSE

2018

Client/Developer: OtisAir

Architect: Kariba

A&G lead staff:

Andrew McBean

Dave Hanlon

Chris Coen

James Hayes

Mitch St. Clair

Completed in 2018, the OtisAir Building provided the air-conditioning specialists with bright and welcoming offices and an 8,000 square foot warehouse to store inventory, materials and equipment. The Class A office and warehouse is raised 10 feet above sea level, and built to withstand Category 5 hurricanes. Located in Industrial Park, the facility is extremely energy-efficient with LED lighting, zoned air-conditioning and sensor GPM plumbing fixtures. Designed to meet the needs of an expanding business, the facility also includes training rooms and a boardroom.







2019 Structure only

Client/Developer: FIN Company Ltd

Architect: Smallwood, Reynolds, Stewart

Stewart & Associates and MJM Design Studio

A&G lead staff:

Dean Gaffigan

Dave Hanlon

James Hayes

Mitch St. Clair

A prestigious Art Deco-inspired development on the southwest tip of Grand Cayman, FIN occupies two acres of oceanfront land, from which a private beach and salt water lagoon have been carved. Completed in 2021, the 36 luxury residences are accessed by private elevator from the underground parking, and feature frameless glass fronts offering expansive ocean views. Penthouses include rooftop terraces with glassed-in conservatories and plunge pools. Amenities include an indoor and outdoor entertaining space on the ground floor, a wine room, a fully equipped business centre, and a cantilevered glass-bottomed pool on the third floor that casts light into the fitness studio and spa below.



2020-2020



PAST PROJECTS

A selection of 50 projects over 50 years

2020-2022

THE GROVE

2020

Client/Developer: Five Points Investment

Architect: Arch and Godfrey Design/Build with Rob Johnson Design Associates

A&G lead staff:

Dean Gaffigan

Shawn Maxwell

Breandon McDonnell

Joel Mislos

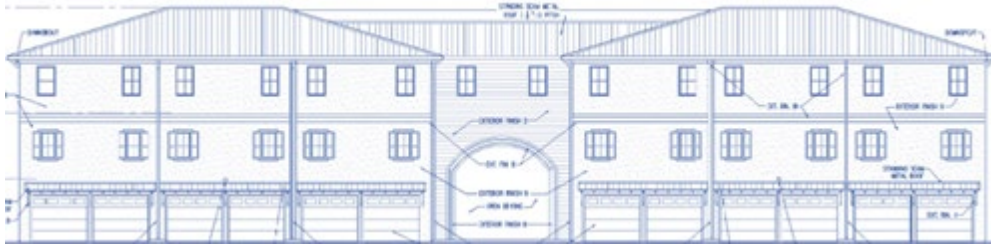
Anthony DeGuzman

James Hayes

A mixed-use development on West Bay Road, The Grove is designed around a 1.5 acre plant-filled courtyard with fountains and seating areas. There are 35 commercial and retail spaces on the first floor, and 59 studio and one-bedroom apartments, with rooftop pools, on the second and third floors. The Grove is designed to Miami-Dade hurricane building code and elevated 12 feet above sea level with underground parking and rooftop solar arrays. Arch and Godfrey completed the development in 2020.







PERIWINKLE

2020

Client/Developer: Periwinkle Ltd.

Architect: Arch and Godfrey Design/Build with EDI Architects

A&G lead staff:

Andrew McBean

James Harvey

Nicholas Mellaneo

Ronald Rivera

Dominique Powell

A multi-phase residential development, Periwinkle is the first LEED certified sustainable community in the Cayman Islands.

As such, the whole build process has been carefully considered to minimise any negative impact on the local environment. Homes have been designed to be highly insulated and include solar arrays to provide clean, renewable energy, and toxin-free building materials have been selected to ensure indoor environments are healthy for the occupants.

Periwinkle is comprised of various home types including waterfront, garden and courtyard townhomes in two-, three- and four-bedroom configurations. These are arranged along a leafy boulevard and around shared green spaces to create a vibrant, tropical community.

Cayman-style exterior architecture lends the development a sense of place, while the contemporary interior design ensures homes are adapted to modern lifestyles.

The whole development has been designed according to the principles of new urbanism, with a focus on shared amenities and green spaces in order to foster a strong sense of community. These include a 4200 square foot clubhouse, a 60 foot pool, a walking path, a wet zone for kids and a barbecue area.

Boat docks are also built along the canal front, allowing residents easy access to the water, while the shops and restaurants at Grand Harbour are easily accessible on foot.

Phase I is complete. Phase II and III is secluded for completion within 2022.



Current

Projects

THE WATERMARK

CURRENT PROJECT

Client/Developer: The Watermark Ltd.

Architect: RAD Architecture Inc and MJM Design Studio

A&G lead staff:

Dave Hanlon

Dean Gaffigan

Daniel Brassard

Anthony Chisholm

Matthew Leon

Anthony De Guzman

Matthew Darnton

Joel Mislos

Ronald Rivera

Simon Dargis

Junior Messervier

Mitch St. Clair

The Watermark is the largest project Arch and Godfrey has taken on to date. Developed by Fraser Wellon and his team, who are also behind The WaterColours, Waters Edge, and the Pinnacle, it is set to be the most luxurious development in the Cayman Islands, if not the Caribbean.

Spanning a total of nine acres, including 300 feet of beachfront, the development comprises a three-acre site directly on Seven Mile Beach, between the Avalon and Harbour Heights, and a six-acre site on the other side of West Bay Road, with a pedestrian bridge connecting the two. Arch and Godfrey currently has in excess of 200 workers on the site.





THE WATERMARK

CURRENT PROJECT

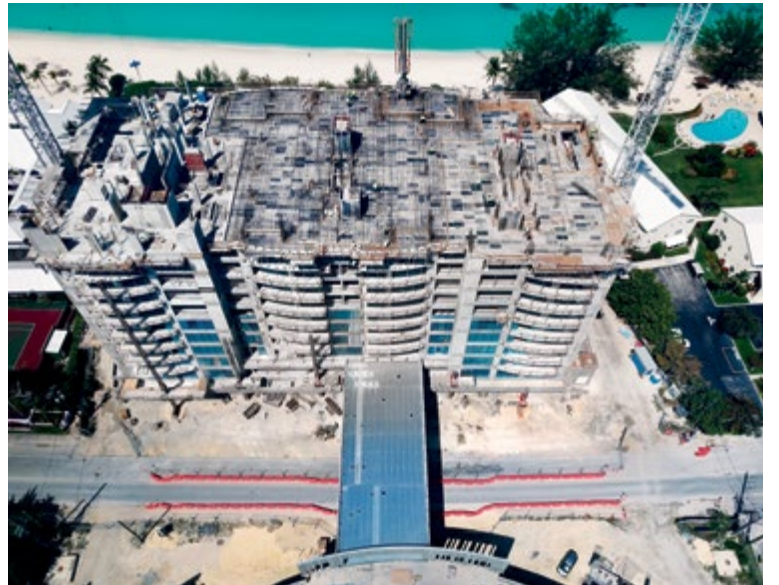
A ten-storey tower on the beachfront will house just 54 exclusive private residences, ranging from two to five bedrooms. With large window-walls to capture the views in every residence, curved terraces and vast open-concept living spaces and private elevators, the Watermark will raise the bar for world-class oceanfront living.

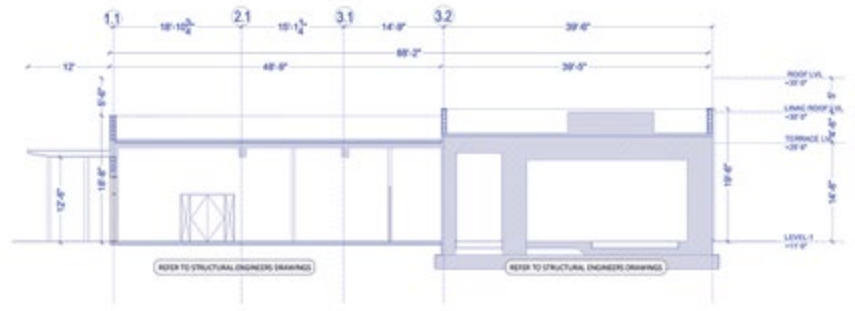
At the beach level, the tower will feature a series of state-of-the-art pools, private beachfront cabanas and an elegant ocean-facing owners' conservatory, with a bar, temperature-controlled wine cellar, and a chef's kitchen.

Along with exceptional residences, the Watermark will offer an unprecedented range and quality of services and amenities. The inland site will include a fine dining restaurant, luxury spa and wellness facilities, a fitness centre and guest suites, and the development as a whole will offer a total of 12 pools (four of which will be rooftop pools), under-building parking, a private dining room, outdoor barbecue areas, a library lounge and more.

The Watermark will be unlike anything Cayman has seen before and will set a new standard for luxury living on Seven Mile Beach.

Construction of the Watermark is scheduled for completion in 2024.





HEALTH CITY CAMANA BAY ONCOLOGY CENTRE (BLOCK B)

CURRENT PROJECT

Client/Developer: Health City Cayman Islands

Architect: NH Healthcare Project Consultancy with DDL Studio

A&G lead staff:

Andrew McBean

Shawn Maxwell

James McVey

Stephen Maclaren

Arch and Godfrey has been selected as the general contractor for the cancer treatment centre at the proposed Health City Camana Bay. The state-of-the-art centre will provide medical oncology, surgical oncology, and radiation therapy, in addition to being a Bone Marrow Transplant (BMT) facility. It is anticipated the purpose-built facility will be completed by the end of 2022.





PRIVATE RESIDENCES

In special circumstances Arch and Godfrey has taken on the construction of private residences for discerning clients seeking the finest quality and unparalleled workmanship.







UNPARALLELED EXPERIENCE